

1The Montgomery Voter
September 2008

The League of Women Voters of Montgomery
P.O. Box 231323, Montgomery, AL 36123-1323
334 264-VOTE

1The President's Message

by
Anne Permaloff

Welcome back to the new League year. This certainly promises to be one of the most exciting election years in American history and one that Leaguers will follow with intense interest.

Our General Meeting on September 17th will serve as our recruitment meeting. I hope all of you will be able to attend and that you have invited at least one friend to come meet us and learn about the League. *Lunch will be provided to all members and invitees* – no cost to you and no need to bring a dish. We'll save that for the Holiday Party in December. Just remember to *RSVP for yourself and any guest(s) to Ursula Nolte (unolte@knology.net or 834-6541) by September 10th.* We need a count of how many will attend.

I am pleased to announce that Louvenia Graham is the new LWVM Secretary. The Board and I thank her for her willingness to serve.

Immediately below this message you will find information about two events the LWVM is co-sponsoring with various local organizations. One is a Candidate's Forum and the other an educational/voter registration event that begins with a reception and is followed by a film depicting the true story of what the suffragettes went through in order to achieve the right to vote. For both events getting a large turnout is important; so, please make every effort to attend and let your friends know about both events.

There is other news, but I'll leave that news until I see you at the meeting on September 17th. For now, let me remind you of two things. (1) The Board of Registrars will need League volunteers to answer phones on Election Day. Please mark that on your calendar. (2) Dues may be sent to Ursula or brought to the meeting on the 17th. A renewal form is attached to this *Voter*.

* * * * *

Date: Thursday, September 25th

Freedom from Fear: A Candidates' Forum on Crimes Against Women.

Place: Faulkner University's Rotunda Auditorium

Time: 7 – 9 p.m.

Co-Sponsors: Family Sunshine Center, the Alabama Coalition Against Domestic Violence, the Alabama Coalition Against Rape, the League of Women Voters, the Montgomery County Domestic Violence Task Force, the Elmore County Domestic Violence Task Force, Faulkner University and its Jones School of Law.

Invited Candidates: Those running for: U.S. Senate, the 2nd and 3rd Congressional Districts, the Montgomery County Circuit Court and Montgomery County District Court.

Format: Candidates will have an opportunity to introduce themselves then to answer questions related to: domestic violence, sexual assault, elder abuse and exploitation. Domestic abuse, sexual assault and coercive exploitation undermine families, communities, education and health.

By attending and lending your presence to this audience, we will demonstrate to the candidates and the public that these issues require constant vigilance, energy and resources.

Date: Sunday, October 19th
Place: Capri Theater -- Iron Jawed Angels
(Recommended for viewers over 16)
Time: Reception at 2 p.m.; Film at 3 p.m.

The League is joining with The Zonta Club of Montgomery and AAUW's Montgomery Branch to co-sponsor this event. *Iron Jawed Angels* is a compelling and engaging film that tells the story of women's struggle for the right to vote. Hilary Swank, Frances O'Connor, Julia Ormond, and Anjelica Huston star; Patrick Dempsey has a supporting role.

This educational, non-partisan event is free and open to the public.

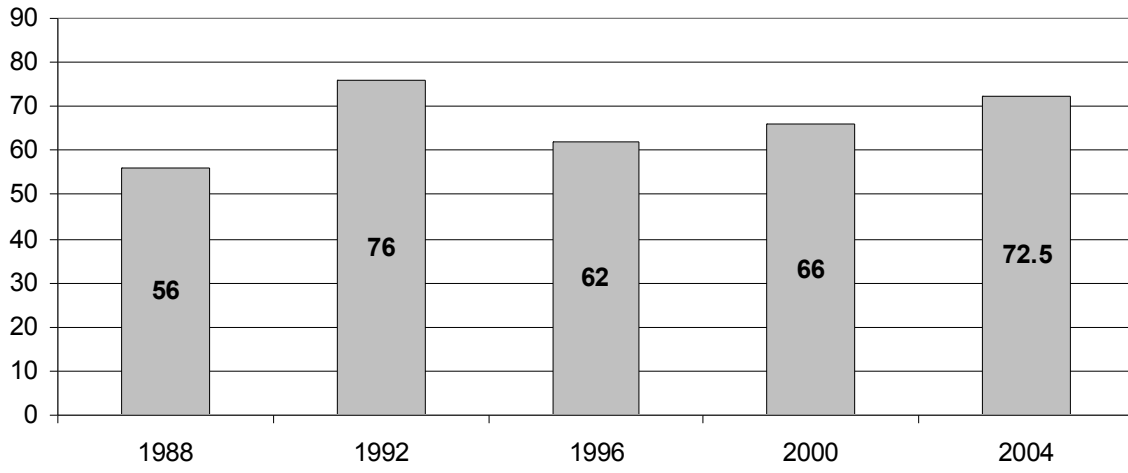
Voter registration forms and voting information will be available at the reception, but campaign materials will *not* be available.

Member News

Merlin Newton had hip replacement surgery in August. Her rehab is progressing very well. Wes Newton is recovering from a bout of pneumonia. He, too, is doing very well.

Anita Kelly's has a new e-mail: Aundria.Burney@alacourt.gov Her work phone is: 240-7362.

Alabama Presidential Election Turnout



**League of Women Voters Montgomery
2008-2009 Officers and Board of Directors**

Members, access Board contact information the LWVM Members web page at:

www.lwval.org/montgomery/membersmont/

or call 334 270-0539 for assistance

President: (2007-2009): Anne Permaloff

1st Vice President (2007-2009): Martha Blackwell

2nd Vice President (2008-2010): Ursula Nolte

Treasurer: (2008-2010): Joyce Nicoll

Secretary: (2008-2010) *: Louvenia Graham

Board of Directors (2007 – 2009):

Edith Davis

Valeria Harman

Barbara Reed

Board of Directors (2008 – 2010):

Trudy Gambles

Helen Tavish

Susannah Stewart

*Filled by Board Election. Will be nominated for 2009-2010 term completion at 2009 Annual Meeting.

1Calendar of LWVM Events

General Meetings – 3rd Wednesday of the Month

Unless noted all meetings are scheduled for the Church of the Ascension (315 Clanton Street)

Details will be filled in as the year progresses.

Sept. 10 -- RSVP due on attendance for the General Meeting on the 17th.

Sept. 17 -- General Meeting and Recruitment Luncheon -- Noon

Sept. 20 -- League of Women Voters of Alabama (LWVAL) Board Meeting.

Montgomery location TBA.

Sept. 25 -- *Freedom from Fear: A Candidates' Forum on Crimes Against Women.*

Faulkner University's Rotunda Auditorium -- 7 p.m.

Oct. 14 – General Meeting -- Speaker: TBA -- Noon

Oct. 19 – *Iron Jawed Angels*, Capri Theater -- 2 p.m. Reception; 3 p.m. Movie

Nov. 4 -- Election Day; LWVM Volunteers at Board of Registrars

Nov. 5 -- LWVM Board Meeting – Noon

Nov. 19 -- General Meeting

Dec. 17-- Holiday Party and Pot Luck Luncheon -- Noon

Jan. 7 -- Board Meeting -- Noon

Jan. 21 -- General Meeting -- Noon

Feb. 18 -- General Meeting -- Noon

March 4 -- Board Meeting -- Noon

March 18 -- General Meeting – Noon

April 1 – Board Meeting – Noon

April 15 – General Meeting – Noon

Late April or early May – State Convention Location and Dates TBA.

May 20 – Annual Meeting. Location TBA. Time 11:30-1 p.m.

1 Membership Application/Renewal

Mail to: Ursula Nolte, LWVM Membership Chair, 3318 Lexington Rd., Montgomery 36109

Name _____

Street _____

City _____ Zip _____

Home Phone: _____ Work Phone: _____

FAX: _____

E-Mail: _____ (Please print)

Member Category:

- Individual \$50.00
- Full-Time Student \$25.00
- Household Member \$25.00*

Name of Household Member: _____

*First member of the household must pay full membership fees.
The household receives only one copy of all League mailings.

Donations to the LWVM or the LWVM Education Fund:

LWVM: Amount: _____

LWVM Education Fund:* Amount: _____

*Ed Fund donations are tax deductible

Policy Areas of Major Interest. (For example, constitutional reform; education; transportation; environment; governmental reform; health care)
