

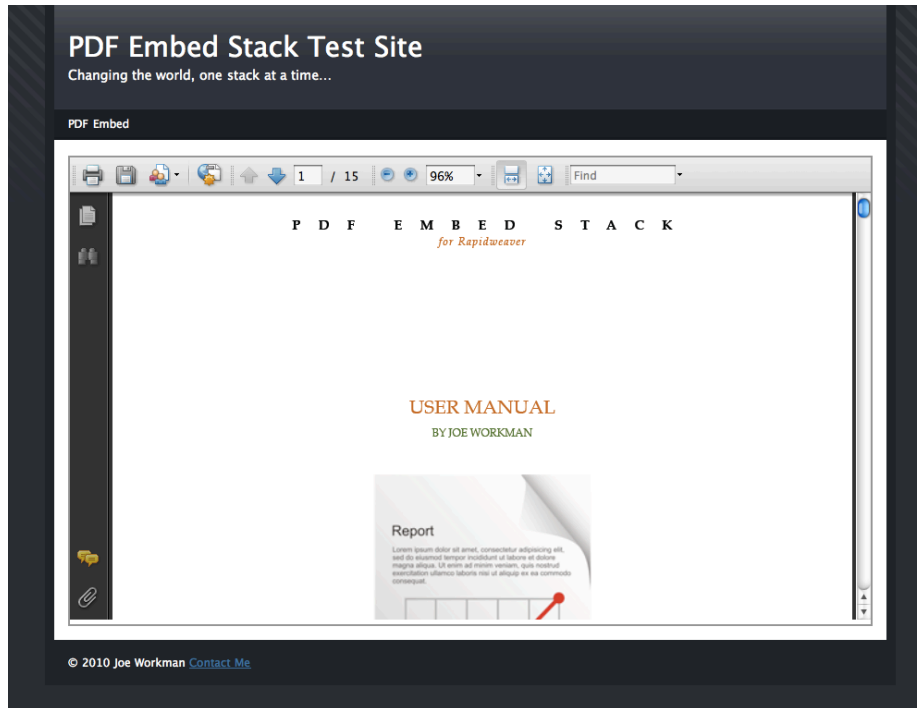
USER MANUAL

BY JOE WORKMAN



Overview	1
Usage & Settings	2
Appendix	4
Appendix	4

Overview



The PDF Embed Stack does exactly what you think it does. It embeds PDF files onto your webpage. In order for this to work, you need to either have a browser with HTML5 support or you need to have a PDF plugin installed in your browser.

PDF Embed Product/Demo Page:

<http://joeworkman.net/rapidweaver/stacks/pdf-embed/>

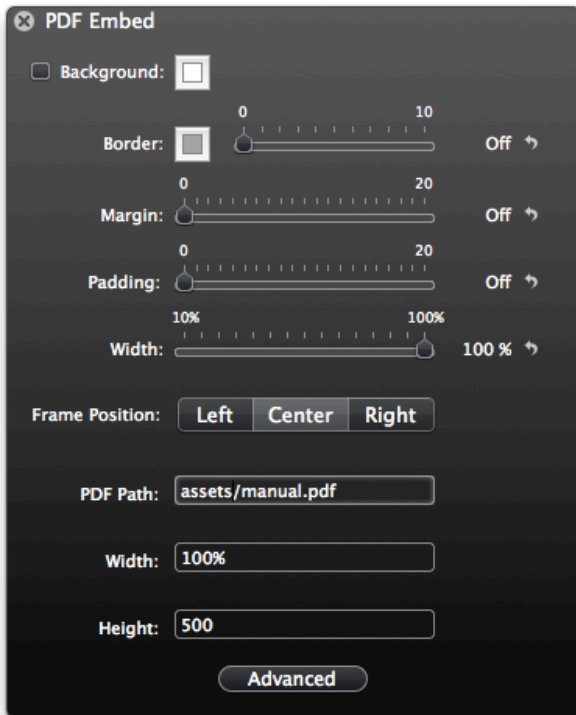
PDF Embed Support: <http://joeworkman.net/support>

Usage & Settings

Basic Setup

1. Drag the PDF Embed Stack onto your page.
2. The the pdf to be used needs to be added to the Page Assets and set the path to your pdf within the **PDF Path** setting. Please refer to the [Adding Page Assets](#) section in the Appendix.
3. You can now setup your desired height and width settings for the PDF. You can use both percentages or a plain number to defined exact pixel width.
4. Now preview and enjoy!

Stack Settings



The image shows a settings panel titled "PDF Embed" with a close button (X) in the top left corner. The panel contains several configuration options:

- Background:** A checkbox that is currently unchecked.
- Border:** A color selection box (grey) and a slider ranging from 0 to 10. To the right of the slider is a toggle switch labeled "Off" with a right-pointing arrow.
- Margin:** A slider ranging from 0 to 20. To the right is a toggle switch labeled "Off" with a right-pointing arrow.
- Padding:** A slider ranging from 0 to 20. To the right is a toggle switch labeled "Off" with a right-pointing arrow.
- Width:** A slider ranging from 10% to 100%. The current value is set to 100%. To the right is a toggle switch labeled "100 %" with a right-pointing arrow.
- Frame Position:** Three buttons labeled "Left", "Center", and "Right". The "Center" button is currently selected.
- PDF Path:** A text input field containing the value "assets/manual.pdf".
- Width:** A text input field containing the value "100%".
- Height:** A text input field containing the value "500".
- Advanced:** A button located at the bottom of the panel.

PDF Path: This is the path to the pdf that you want to use. Please refer to the [Adding Page Assets](#) section in the Appendix for additional info.

Height: The height of the pdf container.

Width: The width of the pdf container.

Appendix

Appendix

Adding Page Assets

There are several stacks that require you to source image files that are external to the stack itself. There are three primary ways to accomplish this:

1. Manually uploading to the server.
2. Using the Resources feature in Rapidweaver 5.x.
3. Using the Page Assets feature in Rapidweaver 4.x.

Manually Uploading to Server

You can manually upload the image files to your web server via your favorite FTP program. Then you can configure the file path to the location that the files were copied to.

1. I upload a file called *my_image.jpg* to my webserver in the folder called *assets*.
2. I can verify my path by going to http://joeworkman.net/assets/my_image.jpg.
3. Once I have verified the image is in the location, I can configure my Image Path to be */assets/my_image.jpg*.

Using Resources (Rapidweaver 5.x)

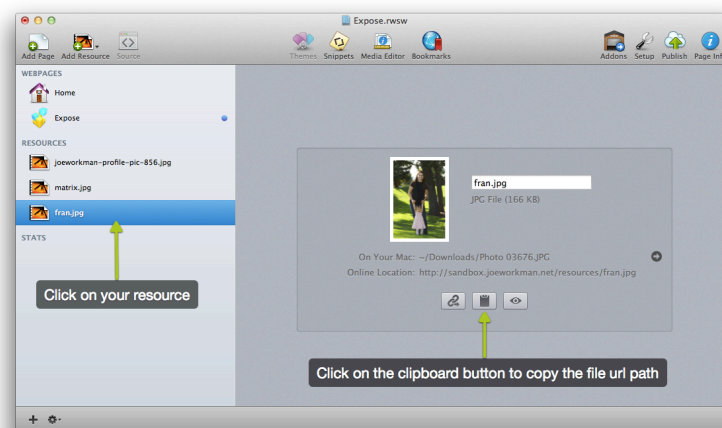
1. Drag your file to the Resources section on the left of the RW screen
2. There are a couple different ways to now get the path to your file. Realmac has created a very informative a FAQ for Resources that you need make sure you review...
<http://support.realmacsoftware.com/kb/rapidweaver/how-to-use-rapidweaver-5-resources>

Resource Macro

The resources macro for RW5 is **%resource(filename.extension)%**. Simply type this macro into where you need to place the path to your file, such as the settings HUD.

Copy Resource URL Path

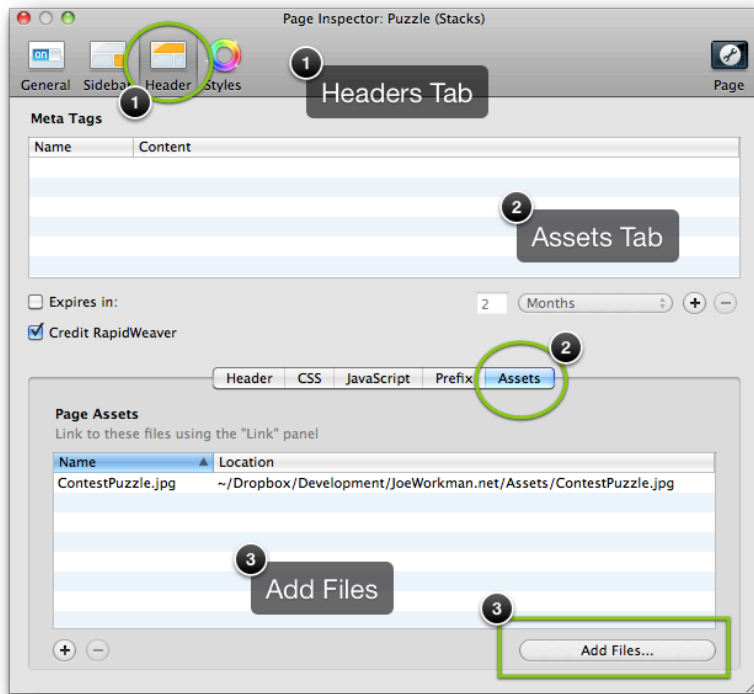
If you click on your file in the resources sidebar, you will enter a configuration window for that resource. If you click on the clipboard icon in the middle, this will copy the full url to this file to your clipboard. This url will be the location of the file after you publish. Therefore, the url will not function until the file is published. Simply paste this url where you need to place the path to your file, such as the settings HUD.



Use caution when using this method. If you were to ever reorganize the structure of your resources or rename them, the url path that you copied previously will no longer be valid.

Using Page Assets (Rapidweaver 4.x)

1. To access the Page Assets in Rapidweaver, you will need to open up your **Page Info/ Page Inspector** window and go to the **Header** tab.
2. Then you will need to go to the **Assets Tab**.
3. Click on the Add Files button and navigate to the image file you want to add.



4. Now the tricky part of figuring out the path to your image file.
 - a. If your Rapidweaver page is the only page that is contained within its folder, than the path to your image will be *“assets/my_image.jpg”*.
 - b. If your Rapidweaver page (for this example: index.html) is **NOT** the only page that is contained within its folder, than the path to your image will be *“index_assets/my_image.jpg”* (%page_name%_assets/%image_name%).